

# ILP ENGLISH ACADEMY

[WWW.ILPSCHOOL.COM](http://WWW.ILPSCHOOL.COM)



“ Hello, Thank you for visiting ”

Today, we are forced with the reality that winning the competition is the way to survive in the world.

Also companies make an effort for technological advancement and to maintain the competitiveness in the country.

The competition before was only domestic.

Due to the globalization, the youth who have dreams and ambitions must improve their English skills in order to compete internationally as English is now known as the international language.

We believe that you consider studying English in the Philippines for you to improve your English skills and abilities at an affordable cost.



ILP English Academy are legally established as a local corporation and located in Bacolod city,  
the Southern part of the Philippines.

We manage all the procedures by ourselves  
from preparation to graduation to help you achieve your goals the best we can.

# About Bacolod City

## Food

Chicken and pork are more commonly served than beef.

Historically, Filipino cuisine is widely influenced by Chinese, Spanish, Indonesian and the other neighboring countries. Filipinos are fond of eating “Lechon; roasted whole young pig” and “Lumpia.” A Chinese influenced delicacy.

Due to its tropical climate, the country is abundant of delicious fruits that are illusive in Korea like mango, durian, papaya and they are very affordable.

## TRANSPORTATION

### • TRICYCLE

Tricycle is a unique transportation. It is a motorbike with a custom designed sidecar attached to it. It is more useful at a narrow road than a main wide road. There are stations for tricycle on the street. When you want to ride a tricycle, just raise your arm and whistle.

### • JEEPNEY

Jeepney is a public vehicle which looks like a bigger version of U.S. Army “jeep”. It is a convenient unit because it is cheap and fast. If you want to get off the jeepney, just knock on the ceiling and it will stop.

## BACOLOD

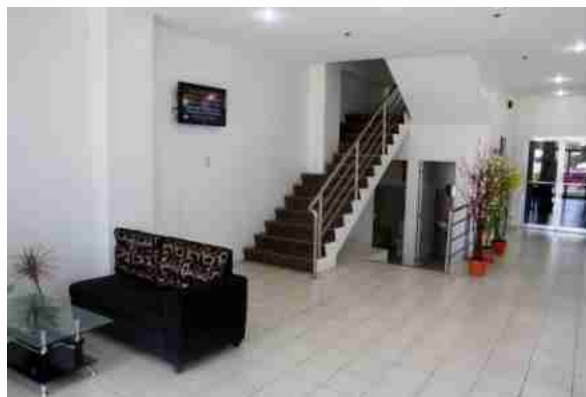
Bacolod City is located in the Western part of Negros Island which is the 7th largest island of the Philippines. It is the capital city of Negros Occidental. Compared to other cities, Bacolod is safer and offers lower cost of living. Recently Bacolod city was highlighted as the best spot for studying English in the Philippines.



# ILP School



We, ILP English academy, are located in the center of the city near Robinsons Place which is one of the biggest shopping malls in the city. There are department stores for shopping, movie theaters, internet cafés and some fast food restaurants in the mall. And this area has convenient transportation systems.





# ILP Dormitory

Our dormitory provides 36 rooms, a study room, restaurant for students' convenience. All our staff do their best to offer you a convenient stay. The managers who stay in the dormitory are always on call to cater to all your needs.

Interior – (hot & cold water, bed, closet, bathroom, air-conditioner , study table , refrigerator)



# Program

“On the first day of class, students are given a test to assess their level. The school offers different curriculums suitable for their level. Tutors are categorized depending on their field of specialization to meet the individual needs of the students.”

National holidays are being observed and no classes on weekends.

• Class : 08:00 ~ 18:00	• Lunch : 12:00 ~ 13:00
• Breakfast : 07:30 ~ 08:30	• Dinner : 18:00 ~ 19:00

Students are free to change the subject to further improve their skills. Books and materials that can aid the students with their studies are readily available.

## • ONE & ONE CLASS

This class is designed to suit the individual level of the student. Tutors are hired after passing a series of exams and interviews. So their expertise is guaranteed. Individual weekly lesson plans for the students are prepared by the tutors based on highly reliable sources.

## • GROUP CLASS (1 Teacher with 6 Students )

We offer 4 group classes tackling different subject areas. Students are free to choose a class that suits their needs. These classes aim to improve the students' conversational skills and help them gain confidence in conversing with their fellow students. (Monday ~ Thursday)  
[ TOEIC SPEAKING, TOEFL READING, IELTS READING, GRAMMAR ]

## • MONTHLY TEST

All students and tutors participate in our monthly test. It consist of written test and English activity test for each subject. Through these activities, students get to assess themselves and make new aims

## • ILP PERSONAL STUDYING FILE

It is a special management file for students. It keeps track of the student's performance and improvements. This is also used as a baseline data for assessing the student's level and is used as a guideline for selecting a suitable program for the student. This file is accessible to students for queries and it is prepared by the head tutors.





## ONE & ONE CLASS Details

### **LISTENING**

This class aims to help the students improve their comprehension skills through listening to movie dialogues and news.

### **BUSINESS ENGLISH**

This class is specially designed for job seekers. Students are taught how to make English resumes and cover letters in this class.

This class aims to prepare the student and make them confident in facing the corporate world. Mock interviews are also conducted in this class.

### **WRITING**

Compared to reading and listening, writing is a more active way to express people's opinion and emotion. This class helps the beginner students to use proper words in a sentence applying basic grammar rules. And for intermediate and advanced students, it helps them to use various expressions through writing essays and movie reviews.

### **SPEAKING & DISCUSSION**

It is composed of speech and discussion with a specific topic that is more detail than common dialogue.

It aims the students to speak widely and correctly with the topic. It offers the students more chance to speak and makes them confident when they speak in English.

### **VOCABULARY**

It helps students to categorize objects, words, concepts and organize information in notes or outlines.

It has been designed for students to learn the meaning of terms and parts of speech easily.

The understanding of the students in the lessons is checked through a series of exercises which practice the new vocabulary.







### **READING, INTONATION & PRONUNCIATION**

The students get to improve their reading comprehension abilities by reading magazine, articles and novels. At the same time, their mispronunciations are corrected while they read those materials.

### **TOEIC, TOEFL, IELTS**

We provide those subjects with Group classes.

# Activities

<b>* Swimming</b>	<b>* Gym</b>	<b>* Golf</b>
		
<p>-Place: 5 mins by car from ILP -Cost: Free</p>	<p>-Place: 3 mins by walk from ILP -Cost : \$20/Month</p>	<p>-Place: 5 mins by car from ILP _Rounding 18holes : \$30</p>
<b>* Boxing</b>	<b>* Badminton</b>	<b>* Basketball</b>
		
<p>-Place: 5 mins by jeepney from ILP -Cost : \$25/Month</p>	<p>-Place: 10 mins by walk from ILP -Cost : \$3/day</p>	<p>-Place: 15 mins by car from ILP We have a schedule to play with our students every Friday night</p>



# Language Course Fee



* ILP DORMITORY	* EDUCATION FEE
Double room : \$490 / 4weeks	ILP 4 Man on Man + 2 Group Class : \$460 / 4weeks
Single room : \$650 / 4weeks	ILP 5 Man on Man + 2 Group Class : \$530 / 4weeks
	ILP 6 Man on Man + 2 Group Class : \$600 / 4weeks

Students are free to choose any curriculum and subject. Additional Man on Man class will be charged \$90/4weeks

* All Costs depend on period [4+2 course and room for 2 students]					
8 weeks	\$1,900	16 weeks	$\$3,800 - \$60 = \$3,740$	24 weeks	$\$5,700 - \$100 = \$5,600$
12 weeks	$\$2,850 - \$40 = \$2,810$	20 weeks	$\$4,750 - \$80 = \$4,670$	Discounts are available if students register for a minimum of 12 weeks	

* All Costs depend on period [5+2 course and room for 2 students]					
8 weeks	\$2,040	16 weeks	$\$4,100 - \$60 = \$4,020$	24 weeks	$\$6,100 - \$100 = \$6,020$
12 weeks	$\$3,060 - \$40 = \$3,020$	20 weeks	$\$5,100 - \$80 = \$5,020$	Discounts are available if students register for a minimum of 12 weeks	

* Cost at once in Pesos	* Additional Charge
<ul style="list-style-type: none"> <li>Entrance \$100</li> <li>I CARD issuance fee PHP 3,000</li> <li>SSP issuance fee PHP 6,000</li> <li>Dormitory deposit PHP 2,500 (fully refundable)</li> <li>Pick up service at Bacolod airport \$30</li> </ul>	<ul style="list-style-type: none"> <li>Monthly visa extension fee PHP 2,500 / month</li> <li>Electricity fee as used per month PHP 1,00 ~ PHP 2,000</li> <li>Study Book PHP 1,000 ~ PHP 1,500</li> </ul>

## Registration/pre-registration

- School days: 5 days a week/4 weeks a month. No classes on Philippine National holidays and weekends.
  - 50 minute class and 10 minute break time
  - Students are allowed to change tutors but students are not allowed to cancel group classes.
  - Tentative schedule is given to students by the manager after the level test.
  - Changing of schedules is done every Friday and effective the following Monday.
  - Students must inform the manager 4 weeks ahead of the extension of their language course and accounts must be settled 2 weeks ahead.
  - When students fail to give prior notice of extension to the office, they will be responsible for any untoward consequences.
  - We limit the number of our students to maintain our standards. If students fail to make proper reservations for extension, we will give the slots to students who have made prior reservations.
  - We honor students with certification if they have completed at least 90% of the course.
  - In case the student is absent due to some sickness, make-up classes can be held if the office has been properly informed.
- 
- Students will be charged with corresponding amounts to any damaged facilities.
  - The school is not responsible for any other problems aside from accommodation and classes.
  - The school is not responsible for the problems brought about by natural calamities, political crisis, and the act of God.
  - The school is not responsible for any physical injury or lost of life that occurred within students' discretion.

**THANK YOU!!**

[WWW.ILPSCHOOL.COM](http://WWW.ILPSCHOOL.COM)

